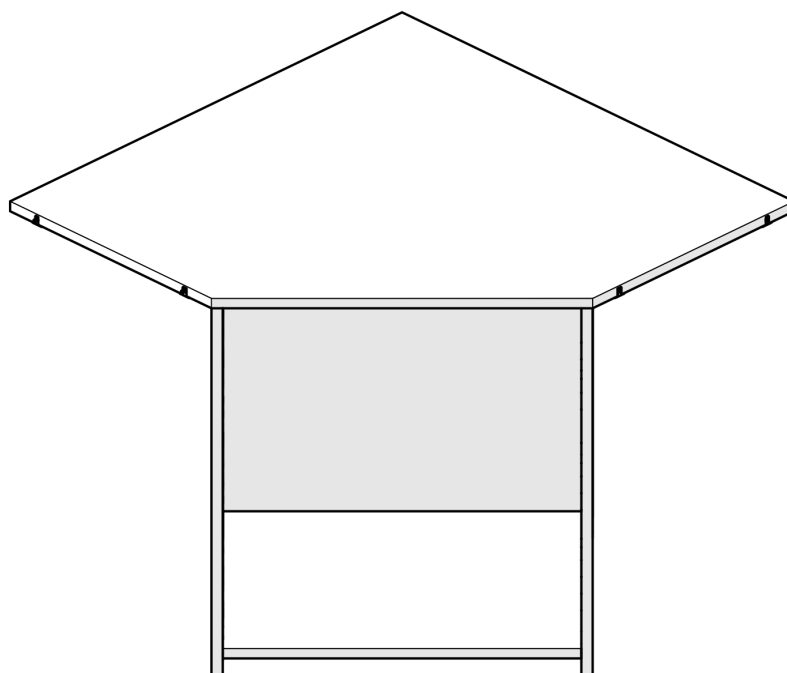


Caisson TOP ANGLE

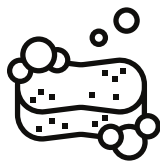
(H724)

NOTICE DE MONTAGE



INFORMATIONS

Conseils d'entretien



Nettoyer à
l'eau tiède
et au savon



Rincer à
l'eau claire



Si besoin,
utiliser du
produit
nettoyant pour
vitres



Sécher avec
un chiffon
propre



**Ne pas
utiliser de
produits
abrasifs**

CITEO | N° REGISTRE FR019580_03UNYT



N° REGISTRE FR019580_103YUI

ecomaison

N° REGISTRE FR019580_04FIWL



FR
Donnez ou recyclez
vos meubles.



Association



Magasin



Déchèterie

<https://quefairedemesdechets.fr>



LE TRI
+ FACILE



ecomaison

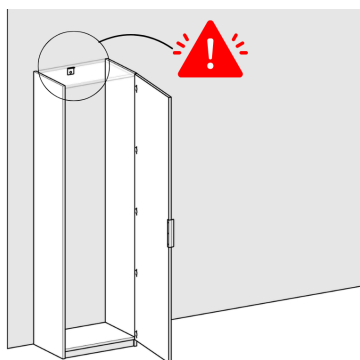
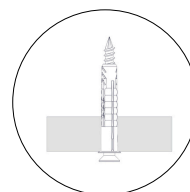
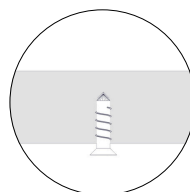
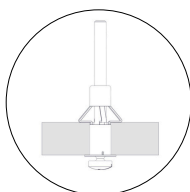


Membre de
**l'Ameublement
français**

Fixations

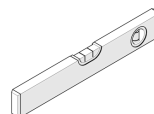
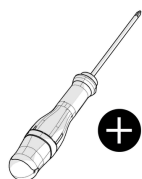


**Aucune visserie n'est
fournie pour la fixation au
mur, au sol, ou au plafond.**
Le choix de la fixation (vis +
cheville) devra être adapté
à votre support.



INFORMATIONS

Outils nécessaires



Mèche à bois Ø3

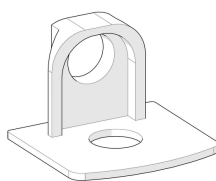
Quincaillerie



Boitier
excentrique x8



Cache D15 x8



Support F18 X4



Goujon x8



Vis euro 4*11 x4



Vis 3.5*30x6

Equipements



Tablettes mobiles



Tiroirs



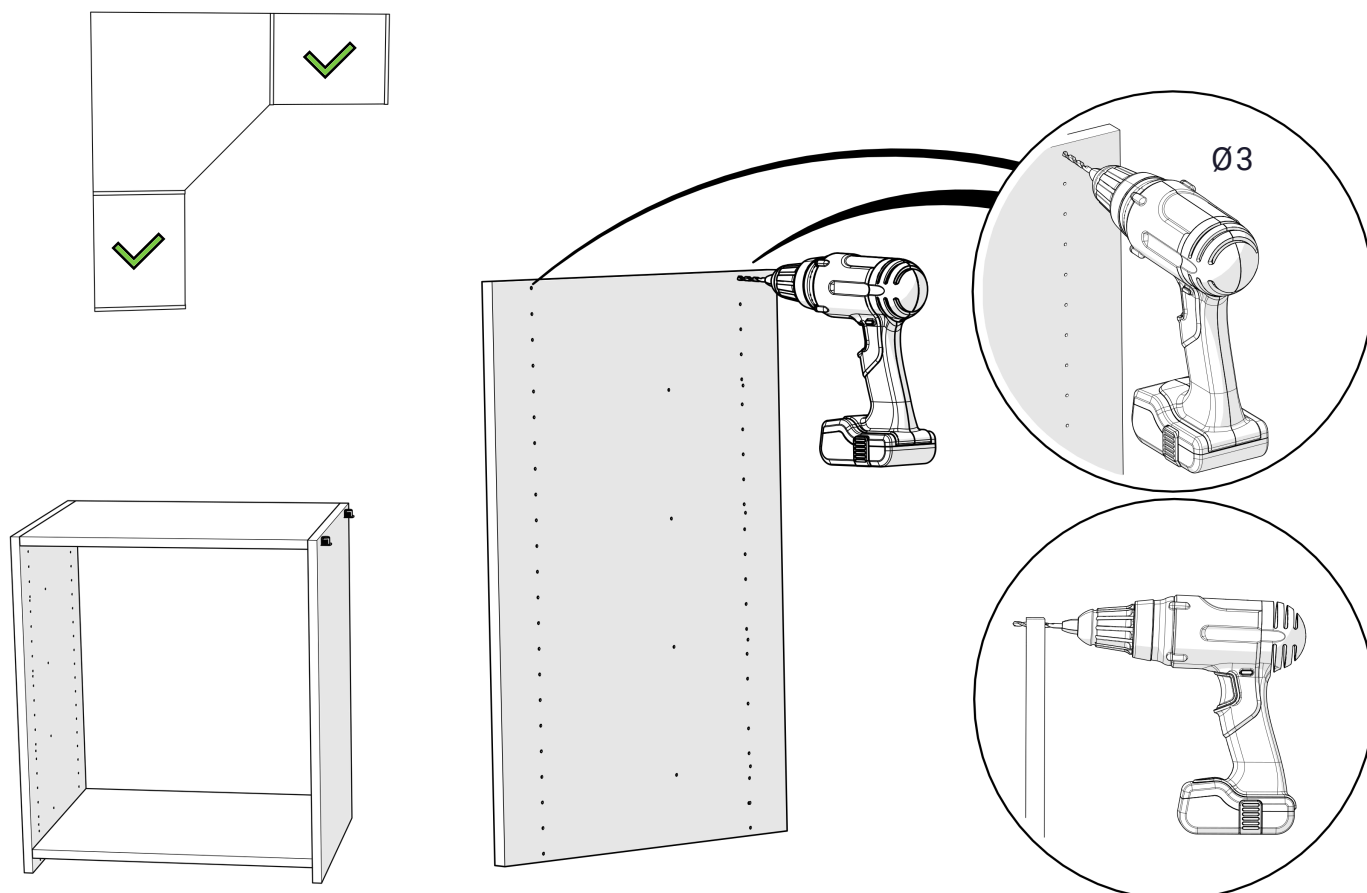
Tablette à recouper



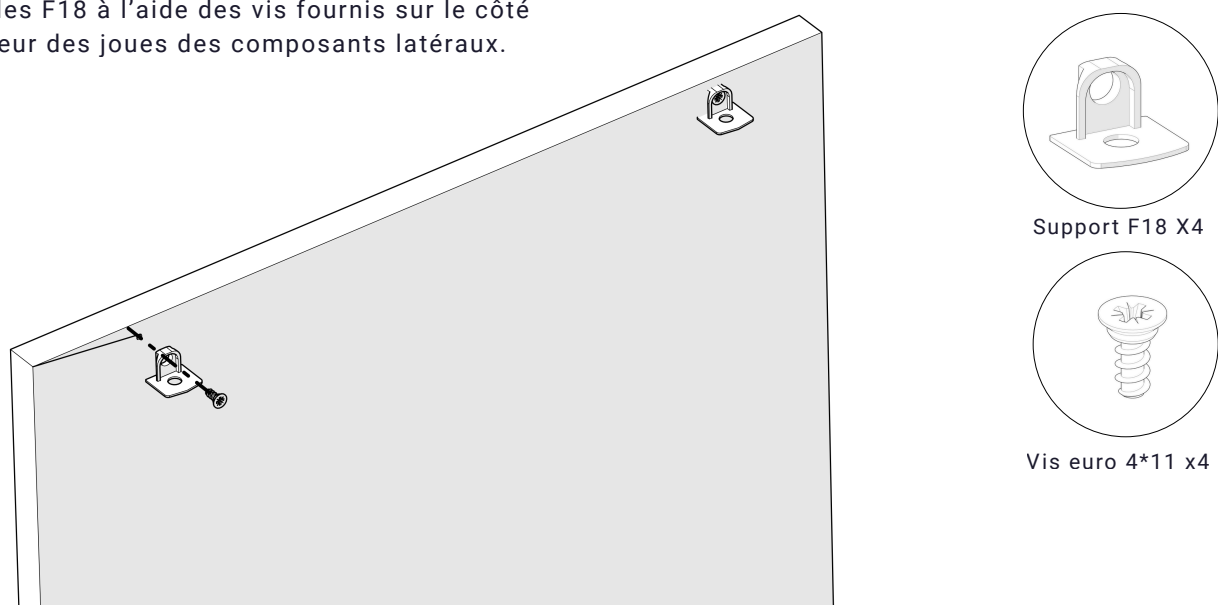
Tringle à recouper

1 Préparation des fixations sur les caissons attenants

1.1 Percé les 2 trous des joues des composants latéraux avec une mèche de 3mm.

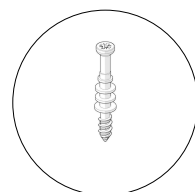
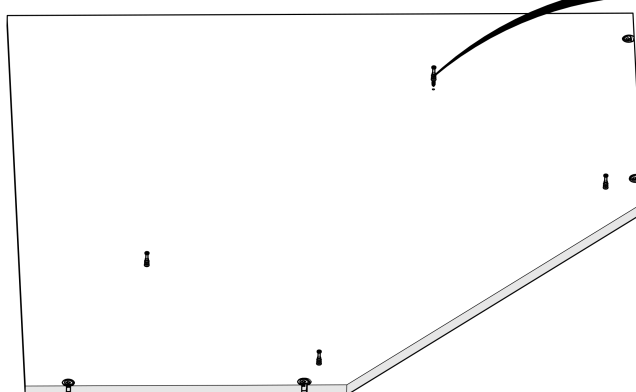
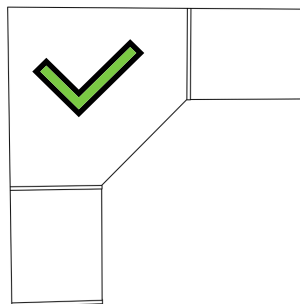
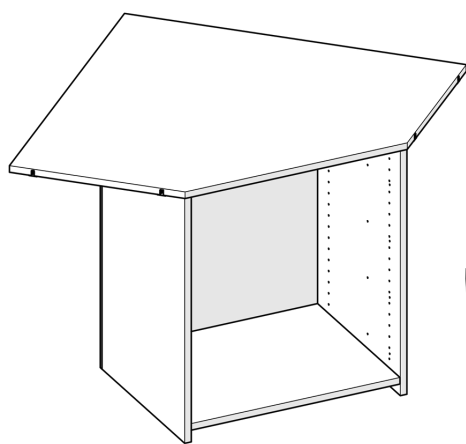


1.2 Fixer les F18 à l'aide des vis fournis sur le côté extérieur des joues des composants latéraux.

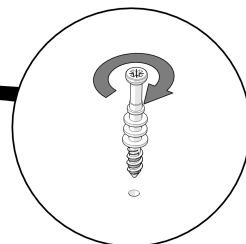


2 Préparation des quincailleries

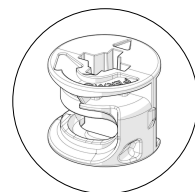
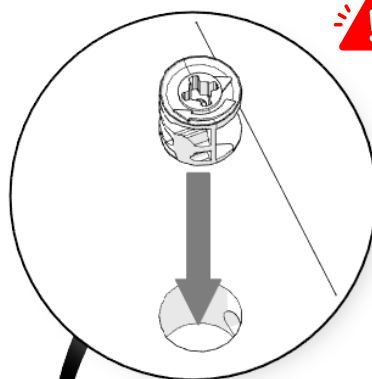
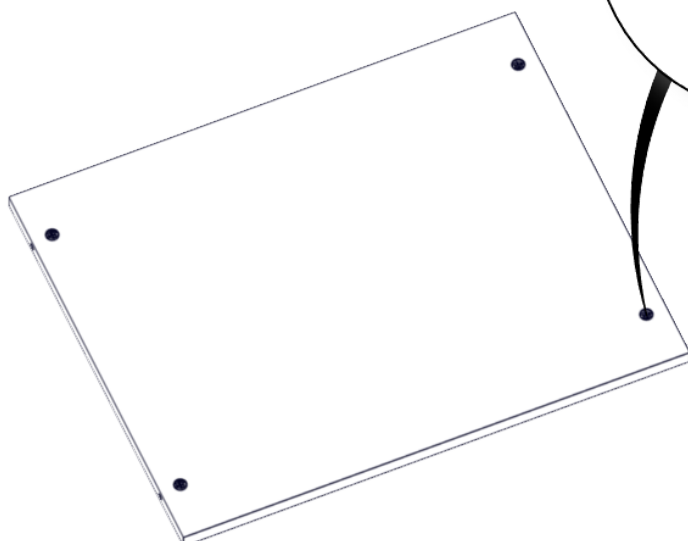
2.1



Goujon x4

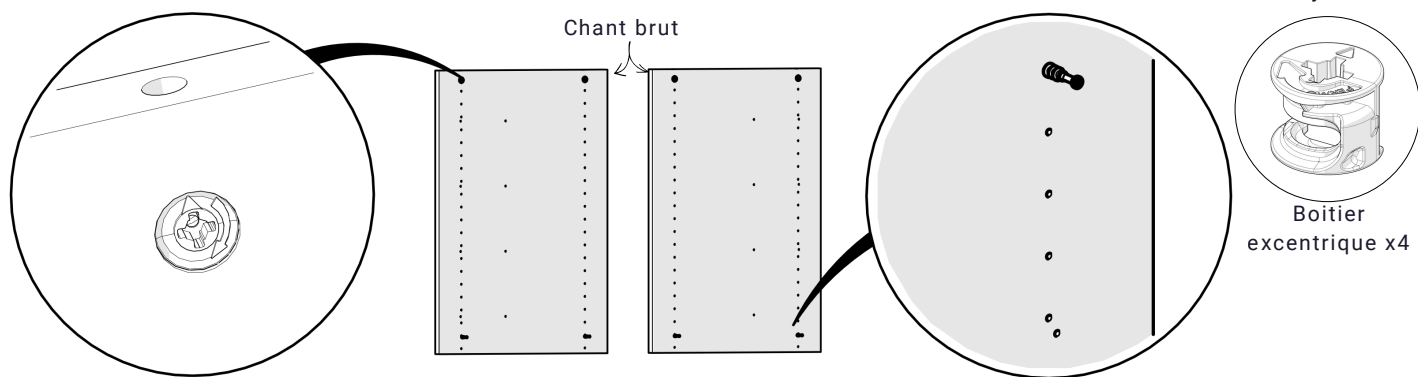


2.2

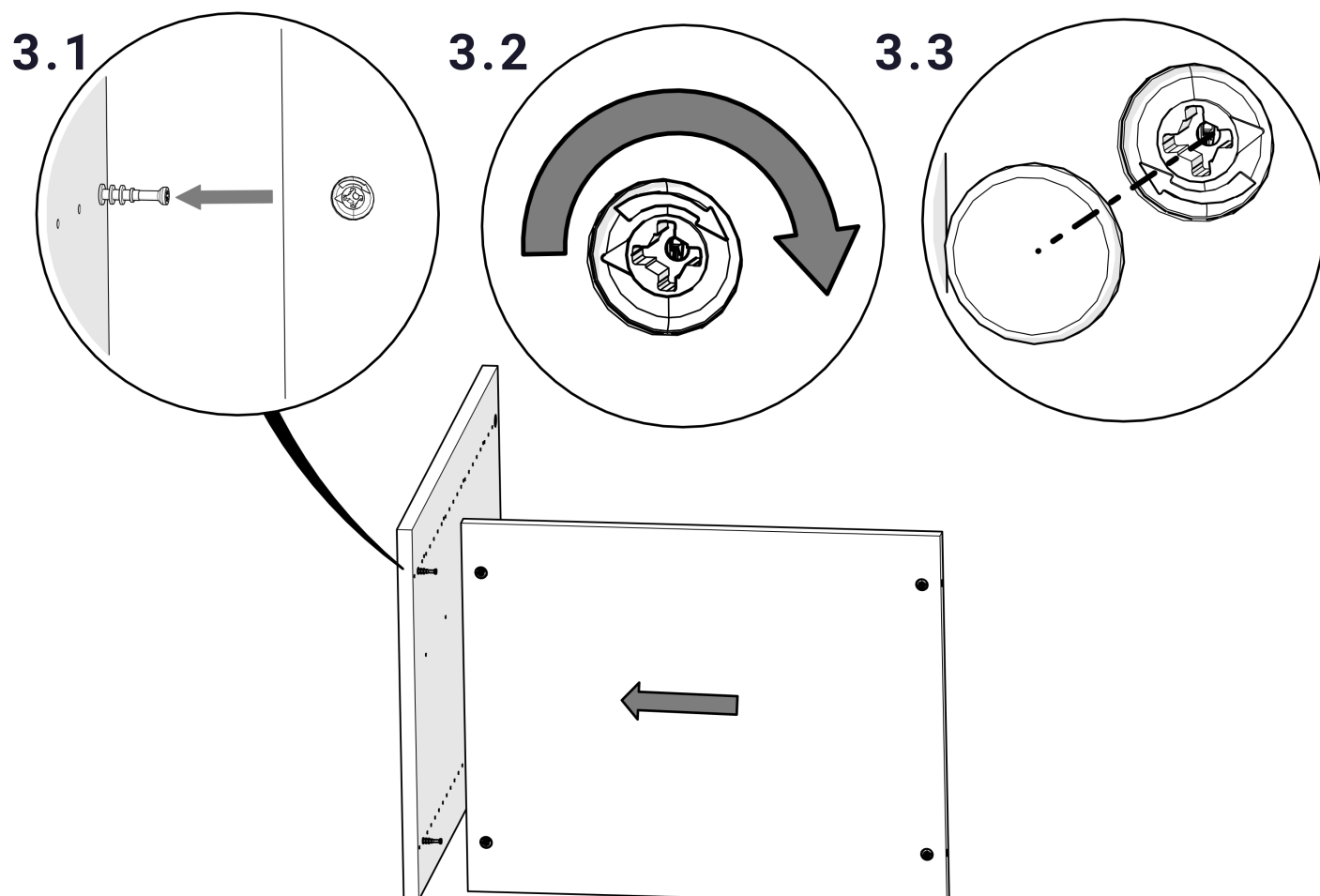
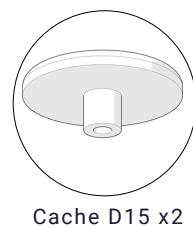


Boitier
excentrique x4

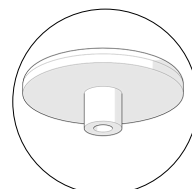
2.3



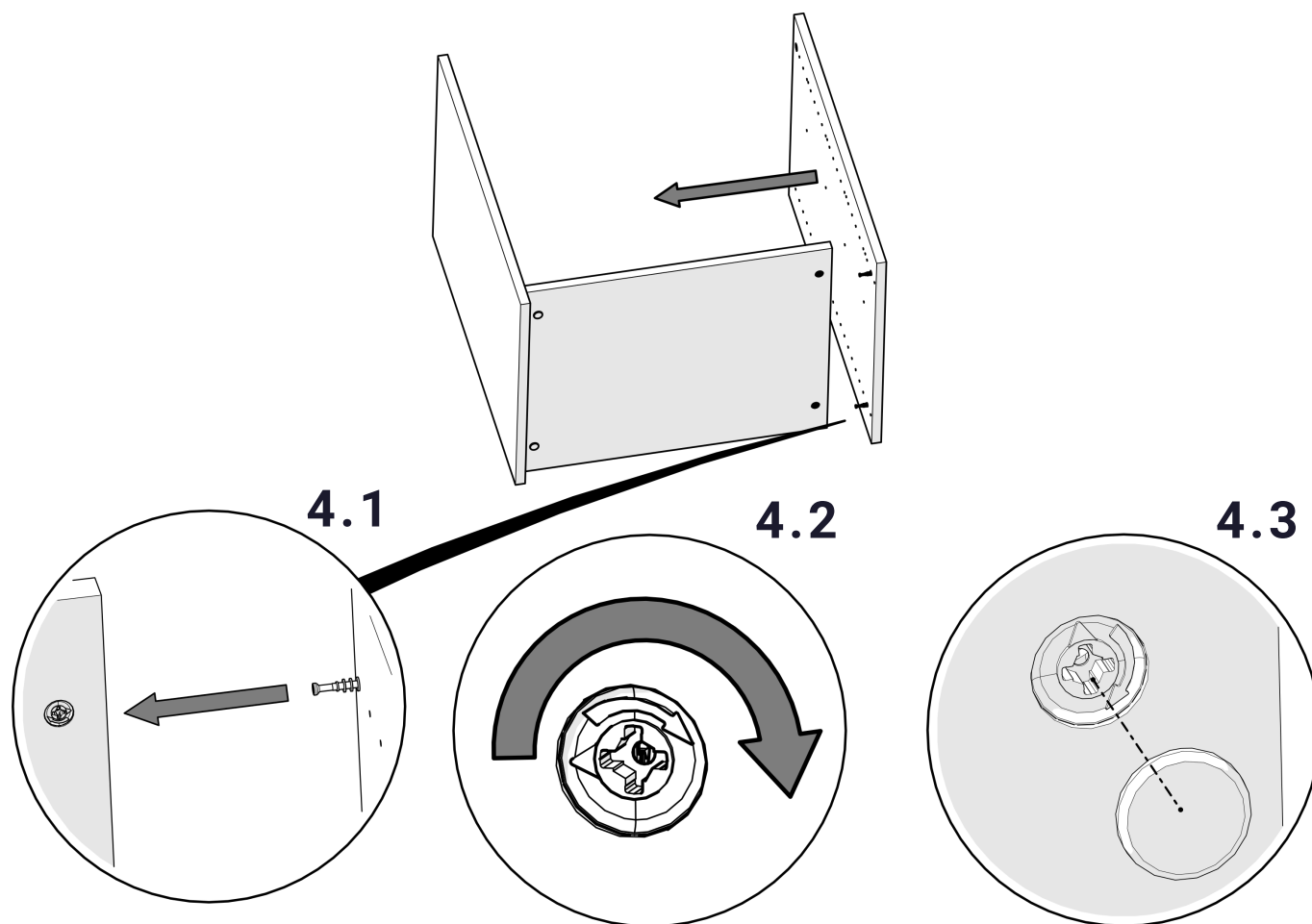
3 Assemblage joue gauche et tablette



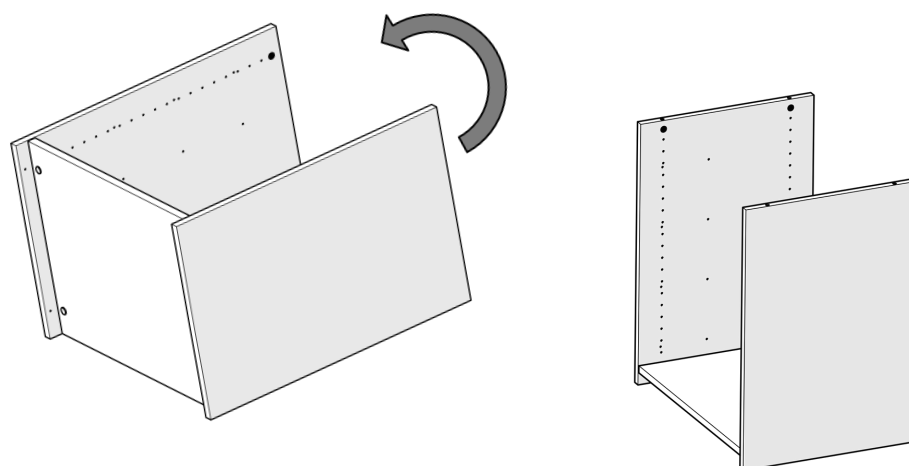
4 Assemblage joue droite



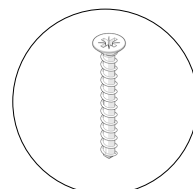
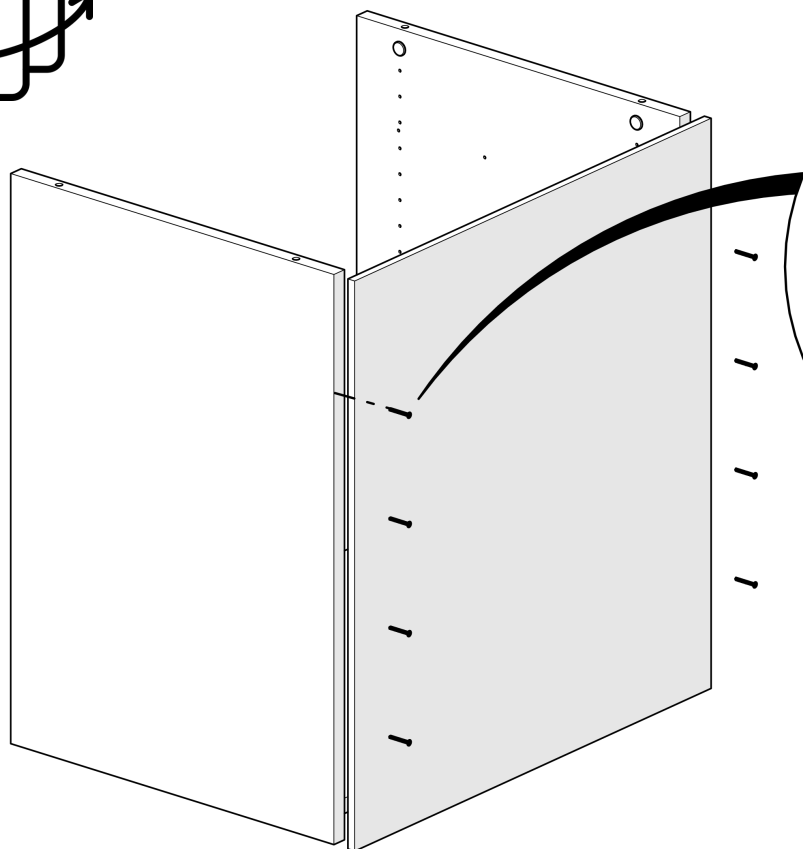
Cache D15 x2



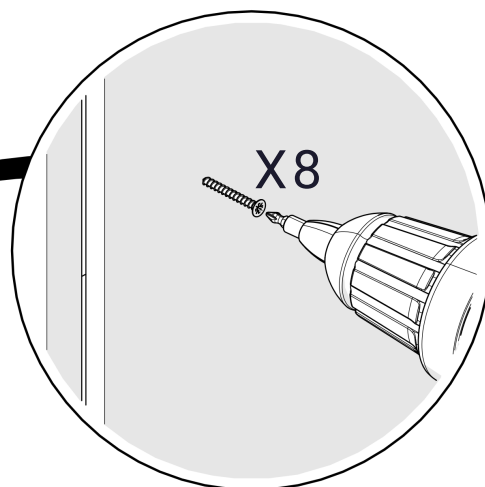
5 Redresser le caisson



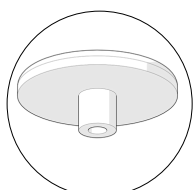
6 Mise en position du fond 10mm



Vis 3.5*30 x8

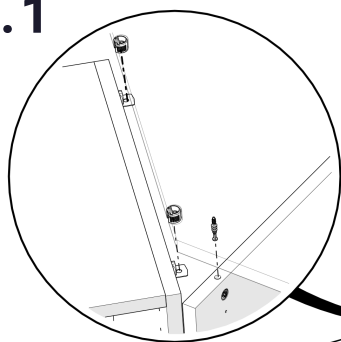


7 Pose du TOP ANGLE

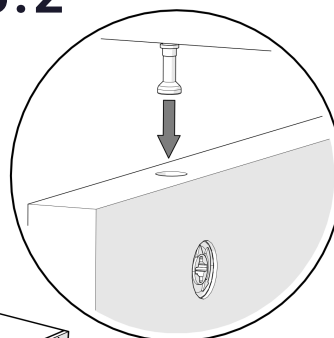


Cache D15 x4

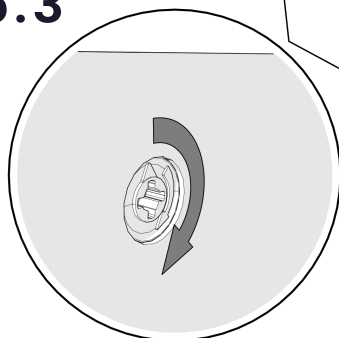
6.1



6.2



6.3



6.4

